

10mm SURFACE MOUNT CIRCULATOR SERIES

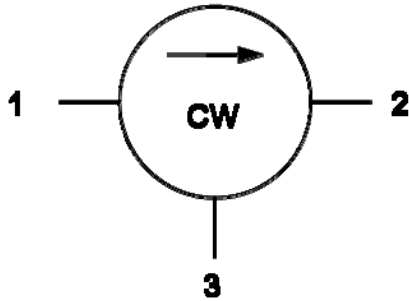
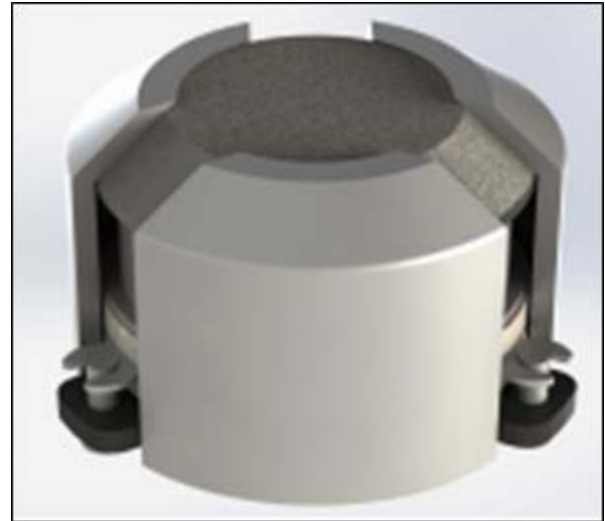


Figure 1. Circulator Block Diagram



Electrical Specifications:

Part Number	Frequency Range (GHz)	Insertion Loss (dB) Max.	Isolation (dB) Min.	Return Loss (dB) Min.	IMD (2 X 10W) dBc Min.	Average/Peak Power (W)	Operating Temp (°C)
SKYFR-001985	1.805 – 1.880	0.30	20	20	60	20/100	-40 to +105
SKYFR-001983	1.930 – 1.995	0.30	20	20	60	20/100	-40 to +105
SKYFR-001909	2.110 – 2.200	0.25	20	20	60	20/160	-40 to +105
SKYFR-002011	2.300 – 2.400	0.30	21	21	65	60/480	-40 to +105
SKYFR-001901	2.496 – 2.690	0.30	20	22	60	20/160	-40 to +110
SKYFR-002083	2.620 – 2.690	0.25	20	23	60	20/100	-40 to +105
SKYFR-002178	3.100 – 3.450	0.30	20	20	65	50/200	-40 to +125
SKYFR-002085	3.300 – 3.800	0.25	20	20	60	30/300	-40 to +125
SKYFR-001922	3.400 – 3.600	0.30	20	20	65	50/200	-40 to +125
SKYFR-001800	3.400 – 3.700	0.30	20	20	60	50/200	-40 to +105
SKYFR-001745	3.400 – 3.800	0.33	20	22	60	50/160	-40 to +110
SKYFR-001917	3.600 – 3.800	0.23	21	22	60	20/160	-40 to +105
SKYFR-002062	3.700 – 4.000	0.25	21	21	60	30/200	-40 to +125
SKYFR-002066	3.700 – 4.200	0.25	20	20	60	20/100	-40 to +110

Part Number	Frequency Range (GHz)	Insertion Loss (dB) Max.	Isolation (dB) Min.	Return Loss (dB) Min.	IMD (2 X 10W) dBc Min.	Average/Peak Power (W)	Operating Temp (°C)
SKYFR-001958	3.800 – 3.900	0.25	22	22	60	20/200	-40 to +125
SKYFR-002154	3.800 – 4.200	0.25	23	23	60	50/200	-40 to +85
SKYFR-001661	4.500 – 4.700	0.40	20	20	60	20/200	-40 to +125
SKYFR-001774	4.800 – 5.000	0.25	23	23	60	20/160	-40 to +105
SKYFR-001693	5.150 – 5.925	0.40	18	18	60	10/30	-40 to +105
SKYFR-002146	9.000 – 10.500	0.60	17	17	60	10/20	-40 to +85

Extended operating temperature range and custom frequency range designs available on request.